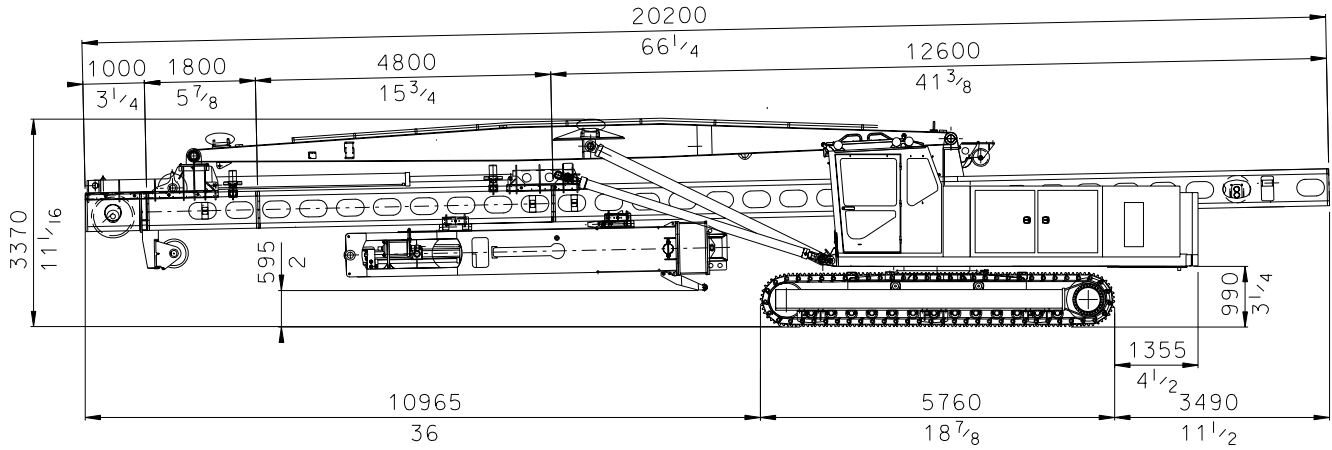
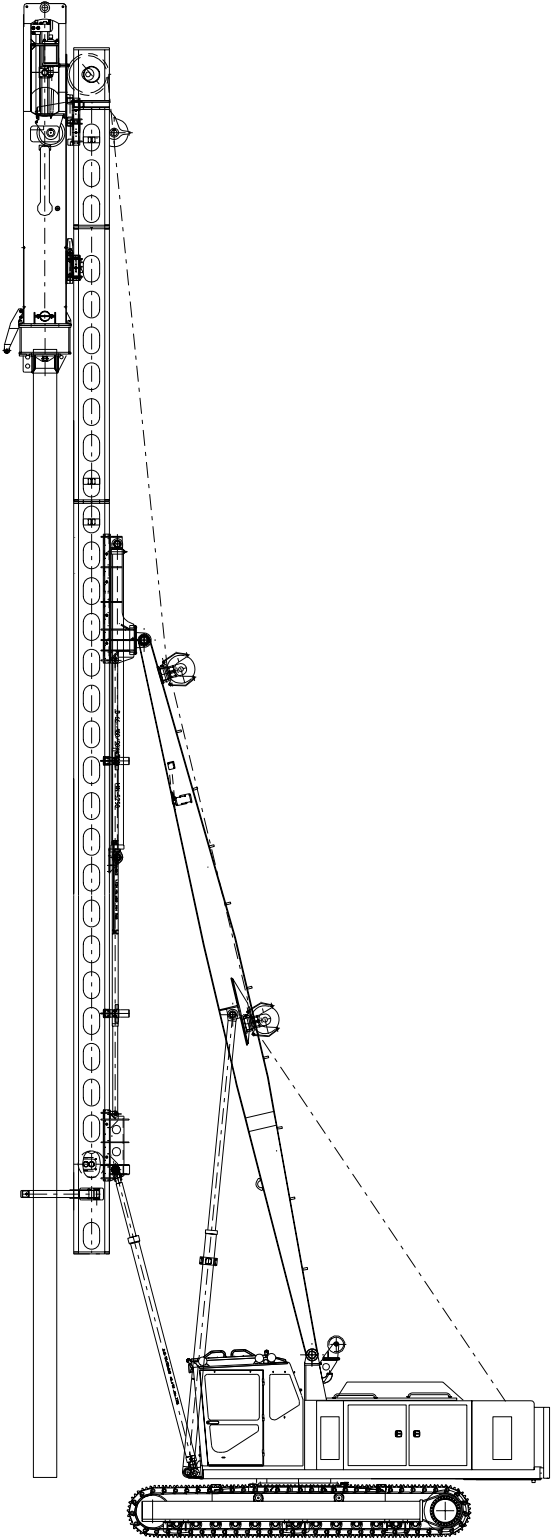


Minimum track width.



Standard PM 23 transport dimensions with HHK 4A hammer.

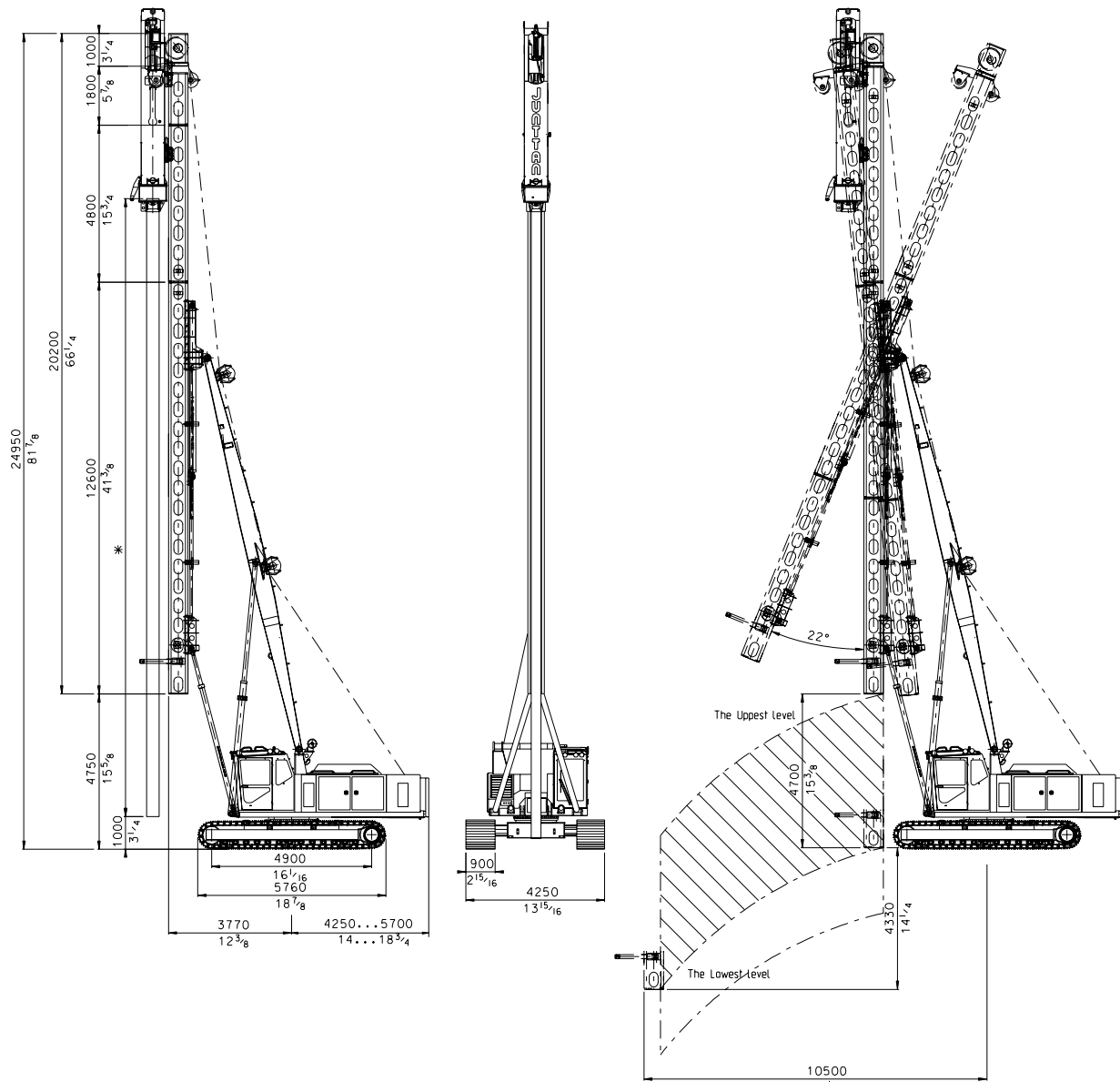


PM 23
Pile Driving Rig

Junttan Oy reserves the right to amend the specification without prior notice. Error and misprints reserved. 13 March 2007 - version M123002.

Junttan PM 23 is a special piling rig designed for job sites where a long leader reach is needed. It is an ideal rig for e.g. bridge, port and railroad worksites. The rig can be used for driving timber, concrete and different types of steel piles. The recommended hammer weight is from 3 000 to 5 000 kg and maximum pile length is 19 meters (62 ft). Because of the long reach of the leader, piles can be handled fast and easily ensuring high productivity. Top pile driving performance is guaranteed with Junttan hydraulic hammers. An optional side drill or vibrator hammer makes pile driving even more efficient in some soil conditions. With optional Junttan equipment, optimised working set-up of the rig can be easily achieved.

This Junttan piling rig has the same proven features as the bigger Junttan machines. Its rugged design makes it a safe and reliable rig even in the most demanding working conditions. The self-erecting leader and many advanced technical features ensure that the rig is ready to work in just a few minutes. The ergonomic and safety tested cabin allows the driver to concentrate completely on his work. The expandable tracks and low centre of gravity make the rig exceptionally stable in different working situations. The long reach of the leader ensures fast spotting of the pile and allows piling in even the most demanding places. Because of compact size the rig can be easily transported to a new working site.



* Pile length depends on the hammer. See the table of hydraulic hammers beside.

Leader			
Type	KE 239902		
Length	Leader sections	m (ft)	12.6+4.8+1.8 (41 3/8+15 3/4+ 5 7/8)
	Total Length	m (ft)	20.2 (66 1/4)
Maximum capacity (pile+hammer)	kg (lb)	14 000 (30 800)	
Movements	Vertical movement up/down	mm (inch)	4700/4330 (185/170)
	Horizontal movement max.	mm (inch)	6650 (262)
	Inclinations	According to a separate capacity table	
Others	Hydraulic pile arms on leader Electronic leader inclinometer		

Uppercarriage			
Winches	(single line pull, 1. layer)		
	Main winch (hammer)	kg (lb)	10 000 (22 000)
	Aux. winch (pile)	kg (lb)	8 000 (17 600)
Engine	Make and Model	Cummins QSB6.7	
	Max. power	kW (hp)	179 (240)
	Fuel tank volume	l (gal)	600 (158)
Hydraulics	Hydraulic oil tank volume	l (gal)	600 (158)
	Max. oil flow	l/min	2x 160 + 86 at 2000 rpm
		(gpm)	(2x 42 + 23 at 2000 rpm)
	Max. pressure	bar (psi)	320 (4640)
Counterweight	Weight	kg (lb)	7 600 (16 700)

Undercarriage			
Type	AV 23LC9201		
	Crawler length	mm (ft)	5760 (18 7/8)
	Min. width	mm (ft)	3250 (10 11/16)
	Max. width	mm (ft)	4250 (13 15/16)
	Triple grouser type track shoes	mm (ft)	900 (2 15/16)

Transport dimensions			
	Length	m (ft)	20.2 (66 1/4)
	Width	mm (ft)	3250 (10 11/16)
	Height	mm (ft)	3370 (11 1/16)
	Total weight	kg (lb)	44 000 (97 000)
(excluding hammer, counterweight and any additional equipment)			

Optional equipment	
• Leader hinge	• Boom joint
• Leader extension 2 m (6 1/2 ft)	• Energy measuring device
• Side cathead	• Flat track shoes
• Side drill (JD 1.5)	• Narrow track shoes 800 mm (2 1/2 ft)
• Stabilizers (rear legs)	• Wide VLC-crawler 3.1-4.5 m (10 1/4-14 3/4 ft)
• Air conditioning for cabin	• Other accessories available on request

Approvals	
Manufactured according to EN 996 standard	

Hydraulic hammer examples for Junttan PM 23					
Model		HHK 3S	HHK 4A	HHK 4S	HHK 5A
Max. energy	kNm (ft-lbs)	44 (32 500)	47 (34 780)	59 (43 500)	59 (43 600)
Stroke	m (ft)	0.05-1.5 (3/16-4 15/16)	0.05-1.2 (3/16-3 15/16)	0.05-1.5 (3/16-4 15/16)	0.05-1.2 (3/16-3 15/16)
Blows (adjustable)	per min	40-100	40-100	40-100	40-100
Ram weight	kg (lb)	3 000 (6 600)	4 000 (8 820)	4 000 (8 820)	5 000 (11 020)
Total weight including drive cap	kg (lb)	6 500 (14 300)	7 500 (16 530)	7 900 (17 400)	8 600 (18 960)
Pile length without leader extension	m (ft)	19 (62)	19 (62)	19 (62)	19 (62)