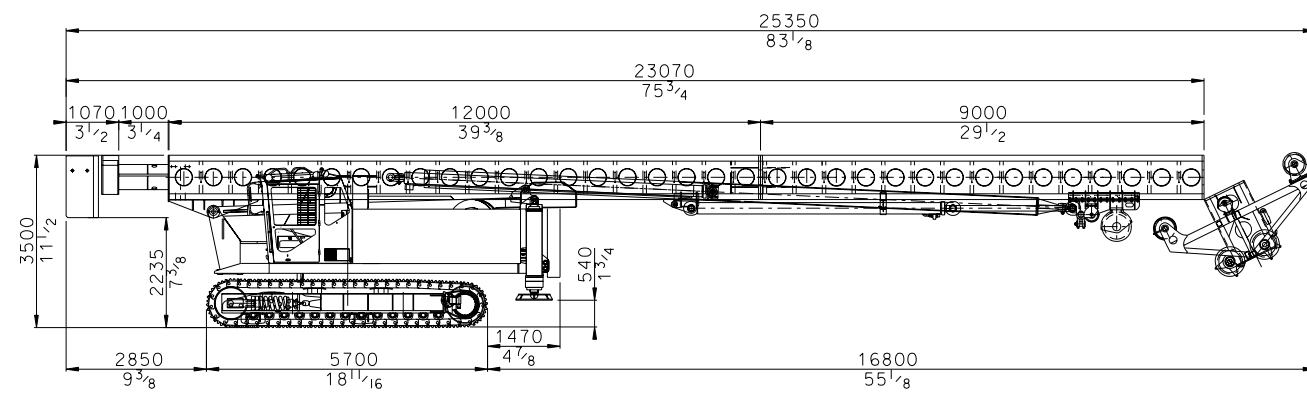
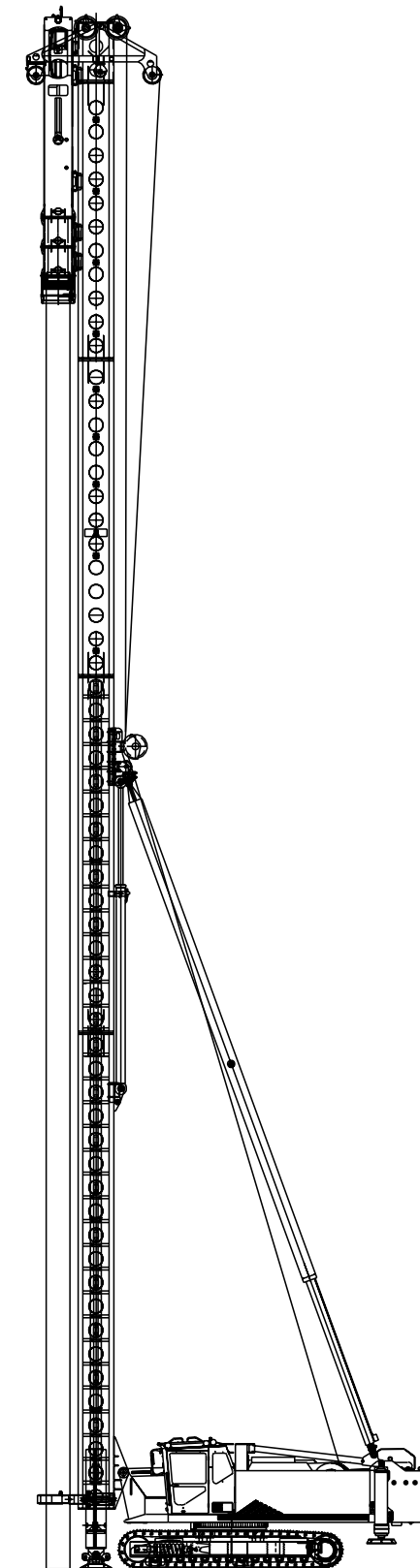


Minimum track width.



Standard PM 30 transport dimensions.



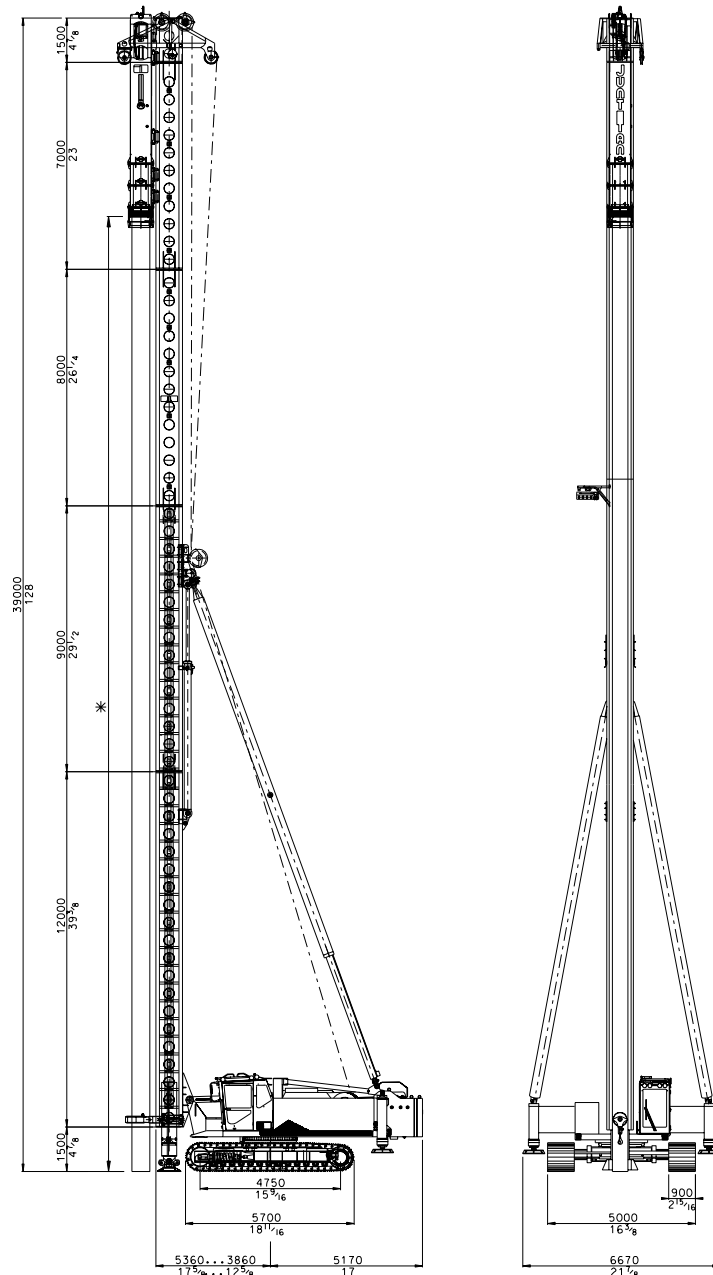
PM 30
Pile Driving Rig

Junttan Oy reserves the right to amend the specification without prior notice. Error and misprints reserved. 3 April 2007 - version M130002.

General Information

Junttan PM 30 is a heavy-duty piling rig designed for pile driving where steel or concrete piles are long and heavy. The recommended hammer weight is from 6 000 to 12 000 kg and the maximum pile length is 36 meters (118 ft). The rig has proven productivity due to top pile driving performance with Junttan hydraulic hammers. An optional side drill or vibrator hammer makes pile driving even more efficient in some soil conditions. With optional Junttan equipment, optimised working set-up of the rig can be easily achieved.

This Junttan piling rig has the same proven features as the smaller Junttan machines. Its rugged design makes it a safe and reliable rig even in the most demanding working conditions. The self-erecting leader and many advanced technical features ensure that the rig is ready to work in just a few minutes. The ergonomic and safety tested cabin allows the driver to concentrate completely on his work. The expandable tracks and low centre of gravity make the rig exceptionally stable in different working situations. The horizontal movement of the leader ensures fast spotting of the pile.



* Pile length depends on the hammer. See the table of hydraulic hammers beside.

Technical Data

Leader				
Type	KE 309301			
Length	Leader sections	m (ft)	12+9+8+7	(39 ³ / ₈ +29 ¹ / ₂ +26 ¹ / ₄ +23)
	Total Length	m (ft)	39	(128)
Maximum capacity (pile+hammer)		kg (lb)	35 000	(77 000)
Movements	Leader foot stroke	mm (inch)	1500	(59)
	Horizontal movement max.	mm (inch)	1500	(59)
	Self erecting length	m (ft)	30	(98)
	Inclinations	According to a separate capacity table		
Others	Hydraulic pile arms on leader Electronic leader inclinometer			
Uppercarriage				
Winches	(single line pull, 1. layer)			
	Main winch (hammer)	kg (lb)	18 000	(39 700)
	Aux. winch (pile)	kg (lb)	10 000	(22 000)
Engine	Make and Model	Cummins QSM11		
	Max. power	kW (hp)	298	(400)
	Fuel tank volume	l (gal)	850	(225)
Hydraulics	Hydraulic oil tank volume	l (gal)	1100	(290)
	Max. oil flow	l/min (gpm)	2x 240 + 126 at 2100 rpm (2x 63 + 33 at 2100 rpm)	
	Max. pressure	bar (psi)	320	(4640)
Counterweight	Weight	kg (lb)	12 800	(28 200)
Others	Stabilizers (rear legs)			
Undercarriage				
Type	AV 300302			
	Crawler length	mm (ft)	5700	(18 ¹¹ / ₁₆)
	Min. width	mm (ft)	3500	(11 ¹ / ₂)
	Max. width	mm (ft)	5000	(16 ³ / ₈)
	Triple grouser type track shoes	mm (ft)	900	(2 ¹⁵ / ₁₆)
Transport dimensions				
	Length	m (ft)	25.35	(83 ¹ / ₈)
	Width	mm (ft)	3660	(12)
	Height	mm (ft)	3500	(11 ¹ / ₂)
	Total weight	kg (lb)	83 000	(183 000)
	(excluding hammer, counterweight and any additional equipment)			
Optional equipment				
	• Leader extension 4 m (13 ¹ / ₈ ft)		• Main winch upgrade 20 000 kg	
	• Extraction cathead		• Auxiliary winch upgrade 12 000 kg	
	• Extraction device		• Aux. II winch 5 000 kg	
	• Person lift		• Flat track shoes	
	• Side drill (JD 3)		• Counterweight 20 000 kg (44 000 lb)	
	• Energy measuring device		• VLC-crawler, length 6800 mm (22 ¹ / ₄ ft)	
	• Air conditioning for cabin		• Other accessories available on request	
Approvals				
	Manufactured according to EN 996 standard			

Hydraulic hammer examples for Junttan PM 30					
Model		HHK 9A	HHK 9S	HHK 12A	HHK 12S
Max. energy	kNm (ft-lbs)	106 (78 300)	132 (97 700)	141 (104 200)	177 (130 600)
Stroke	m (ft)	0.05-1.2 (³ / ₁₆ -3 ¹⁵ / ₁₆)	0.05-1.5 (³ / ₁₆ -4 ¹⁵ / ₁₆)	0.05-1.2 (³ / ₁₆ -3 ¹⁵ / ₁₆)	0.05-1.5 (³ / ₁₆ -4 ¹⁵ / ₁₆)
Blows (adjustable)	per min	40-100	40-100	40-100	40-100
Ram weight	kg (lb)	9 000 (19 840)	9 000 (19 840)	12 000 (26 460)	12 000 (26 460)
Total weight including drive cap	kg (lb)	13 400 (29 540)	16 000 (35 270)	20 200 (44 530)	22 000 (48 500)
Pile length without leader extension	m (ft)	32 (105)	31 (102)	32 (105)	31 (102)